



MASTERPACK

# ADVANCED WAREHOUSE MANAGEMENT

## BENEFITS

*Dramatically increase order fulfillment rates*

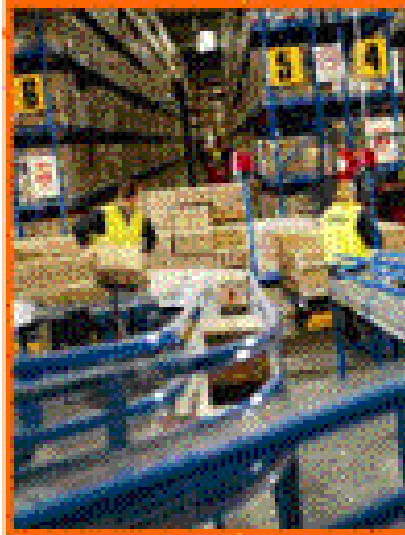
*Hold less stock, and use less labour and equipment*

*Obtain higher customer satisfaction*

*Less returns*

*Quicker receipt of payments*

*Achieve payback in 6 to 9 months from the installation of Radio Frequency warehousing*



Warehouse Manager is a fully featured, highly functional Advanced Warehouse Management System (AWMS). It has been specifically designed for real-time task handling, using Radio Frequency (RF) terminals, and has been developed using Open Systems technology. This ensures ongoing adaptability to warehouse specific operations and management needs.

Warehouse Manager follows a "management by exception" approach for real-time management of the warehouse activities. It schedules and monitors normal warehouse processes on a real-time basis, without supervisor intervention, and will always attempt to optimise

warehouse capacity and resources usage. Only exceptions will then require management intervention.

## FEATURES

- **Goods receiving** (RF or paper)
- QA and **Quarantine** processes
- **Putaway** (directed and reactive)
- Letdown and **Replenishment**
- **Bulk** picking
- **Unit** picking
- **Despatch**
- **Stocktake** (cyclic, full and wall-to-wall)
- Housekeeping and **data capture** activities
- Location **management**
- **Communications** with RF equipment including RF picking trolleys
- **Cross docking**
- **Stock classification** (based on higher moving stock, heavy stock or bulky stock)



**FLEXIBILITY, FUNCTIONALITY, INTEGRITY, SIMPLICITY**

- **Multiple storage** mediums
- **FIFO, batch/lot** or **expiry** date rules
- **Task priority** management
- Operator / Machine and **Zone restrictions**
- **Levels of Replenishment** (immediate, critical and normal)
- Replenishment can optionally **fill to capacity** or **fill to demand**
- Ability to **order split** and **order consolidate**
- **Bulk picking**, picking of **case lots** and **split case** processing
- Interfacing to **specialised equipment** (carousels, A-frames, pick carts, AS/RS, Pick-to-Light, Conveyor Control, and Sortation systems etc)
- **Reallocation** of picking and **reserve locations**
- **Product consolidation**

**INTEGRATIONS**

- Integrated to Masterpacks ERP application or stand alone as a best of breed solution interfaced to other business systems such as SAP
- Integrated to MITS Data Modelling for in-depth analysis of warehousing data
- Integrated to Microsoft Office products

Modify Priority/Status

| Task | Description         | Part | Details               | Lines | Priority | Status |
|------|---------------------|------|-----------------------|-------|----------|--------|
| 50   | Immediate Replenish | 1    | GNPLOW550 BULK3 BAY18 | 1     | 10       | R      |
| 39   | Putaway             | 1    | P76 KUMERS            | 2     | 50       | R      |
| 45   | Putaway             | 1    | P77 SUR001            | 1     | 50       | R      |
| 51   | Product movement    | 1    | GNPLOW550 BULK3 QA03  | 1     | 65       | R      |
|      |                     |      |                       |       |          |        |
|      |                     |      |                       |       |          |        |
|      |                     |      |                       |       |          |        |
|      |                     |      |                       |       |          |        |
|      |                     |      |                       |       |          |        |
|      |                     |      |                       |       |          |        |
|      |                     |      |                       |       |          |        |
|      |                     |      |                       |       |          |        |
|      |                     |      |                       |       |          |        |
|      |                     |      |                       |       |          |        |
|      |                     |      |                       |       |          |        |

F2-OK  
F5-Cancel



**THE COMPANY**

Meier Business Systems (MBS) is an Australian owned company that has been providing a broad range of computer support services and products since 1987.

MBS offers outstanding skills in operating system, hardware, database and network support. These skills complement MBS's activities in the application software development arena and together with a range of open systems and storage solutions, form the primary focus of all MBS systems integration and support activity.

MBS provides ERP and Supply Chain solutions that are leading edge and widely accepted throughout the world.



[www.mbs.net.au](http://www.mbs.net.au)  
[Masterpack@mbs.net.au](mailto:Masterpack@mbs.net.au)

Melbourne  
 Phone: 61 (03) 9571-3111  
 Fax: 61 (03) 9571-3222

Sydney  
 Phone: 61 (02) 9954-5000  
 Fax: 61 (02) 9954-5100

**FLEXIBILITY, FUNCTIONALITY, INTEGRITY, SIMPLICITY**